

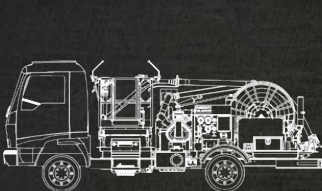
Fueling Global Aviation since 1972



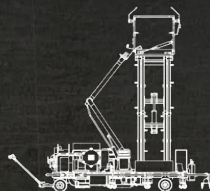
TM

FUELING SYSTEMS

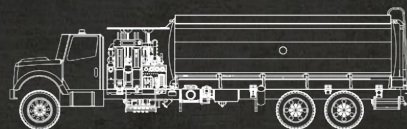
RELIABILITY. SUPPORT. DELIVERY. TM



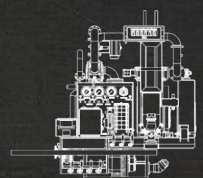
HYDRANT DISPENSERS



HYDRANT CARTS



AVIATION REFUELERS



REFUELING MODULES

BETA Fueling Systems

Fueling global aviation since 1972



For more than 50 years, BETA Fueling Systems has led the aviation industry in the manufacture of safe, reliable refueling equipment – serving the world’s most demanding military and commercial aviation customers with excellence. Every unit we manufacture begins with a confirmed understanding of the technical requirements, operational objectives and delivery expectations that are mission-critical to our customer’s success. Our LEAN cellular manufacturing processes ensure adherence to high standards and result in a final product built with engineered precision and delivered on time under the most demanding requirements.

From hydrant dispensing equipment to aviation refueling modules and fuel filter vessels, BETA provides the best overall value, consistently exceeding customer expectations.



BETA has thousands of aviation refueling units in service today in more than 30 countries around the world. No other manufacturer has this level of global experience and proficiency in building to international fueling specifications.

“WE MANUFACTURE OVER 70 PERCENT OF THE CONTENT ON THE EQUIPMENT WE PROVIDE. NO COMPETITOR COMES CLOSE.”

DAVID CURE, AMERICAS AND INTERNATIONAL SALES MANAGER

“We switched to buying BETA Hydrant Fuel Carts a few years ago and couldn’t be happier. The Carts have a better build quality, and that’s made a noticeable impact on our Operations.”

TOM KELLY, ASSOCIATE FUEL CATEGORY MANAGER, SOUTHWEST AIRLINES



RELIABILITY | SUPPORT | DELIVERY™

BETA is committed to meeting our customers' most critical needs. From engineering to fabrication, and final assembly to green-tag validation, every person and process in our business is measured and held accountable to the three critical factors: **RELIABILITY OF OUR PRODUCTS; TECHNICAL SUPPORT WHEN IT MATTERS MOST** and **MEETING OUR COMMITMENTS WITH ON-TIME DELIVERY**. This is *The BETA Way*.

"Our equipment is the point where our customers' fuel turns into profit. Without reliable and properly supported equipment — delivered on time — our customers can't make money. Uptime is our job number one. We consider the customer as our partner in business. What is important to them is most important to us — this is the BETA Way."

- JON INGOLD, PRESIDENT AND CEO, BETA FUELING SYSTEMS



Hydrant Dispensers



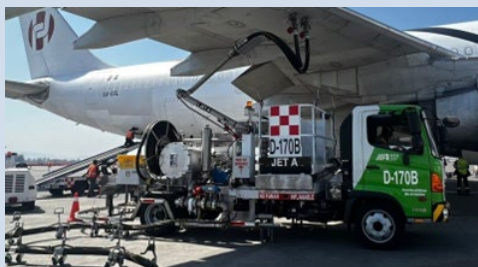
Easy, Efficient and Reliable

BETA Fueling Systems is a global leader in the design and manufacture of aviation fueling hydrant equipment. With hundreds of units currently in service at major airports around the globe, BETA hydrant dispensers perform reliably for the world's most demanding oil companies, airlines, and aviation fueling companies.



800 GPM Hydrant Dispensers

BETA's 800 GPM Hydrant Dispensers are designed for reliable and efficient dispensing of fuel to America's busiest airports.



1000 GPM Hydrant Dispensers (NOC)

Our 1000 GPM design for National Oil Companies (NOC) around the globe meet JIG standards and customer-specific design requirements.



1000 GPM Dispensers (MOC)

BETA's 1000 GPM MOC Hydrant Dispensers are specifically designed for Major Oil Companies (MOC) with global operations.

Hydrant Carts



Keeping it Simple and Reliable

For more than 30 years, BETA has been a leader in the revolution of cost-effective fueling innovations. Our latest high-flow, self-propelled hydrant carts and towable narrow-body carts are easy to operate, and reliable in extreme climates. It's no wonder they are the equipment of choice in the world's busiest airports.



450 GPM Towable Carts

Towable, solar-powered BETA carts are ideal for operations requiring quick gate turns and cost-efficient refueling of narrow body aircraft with peak fueling performance up to 450 GPM.



800 GPM Wide-Body Carts

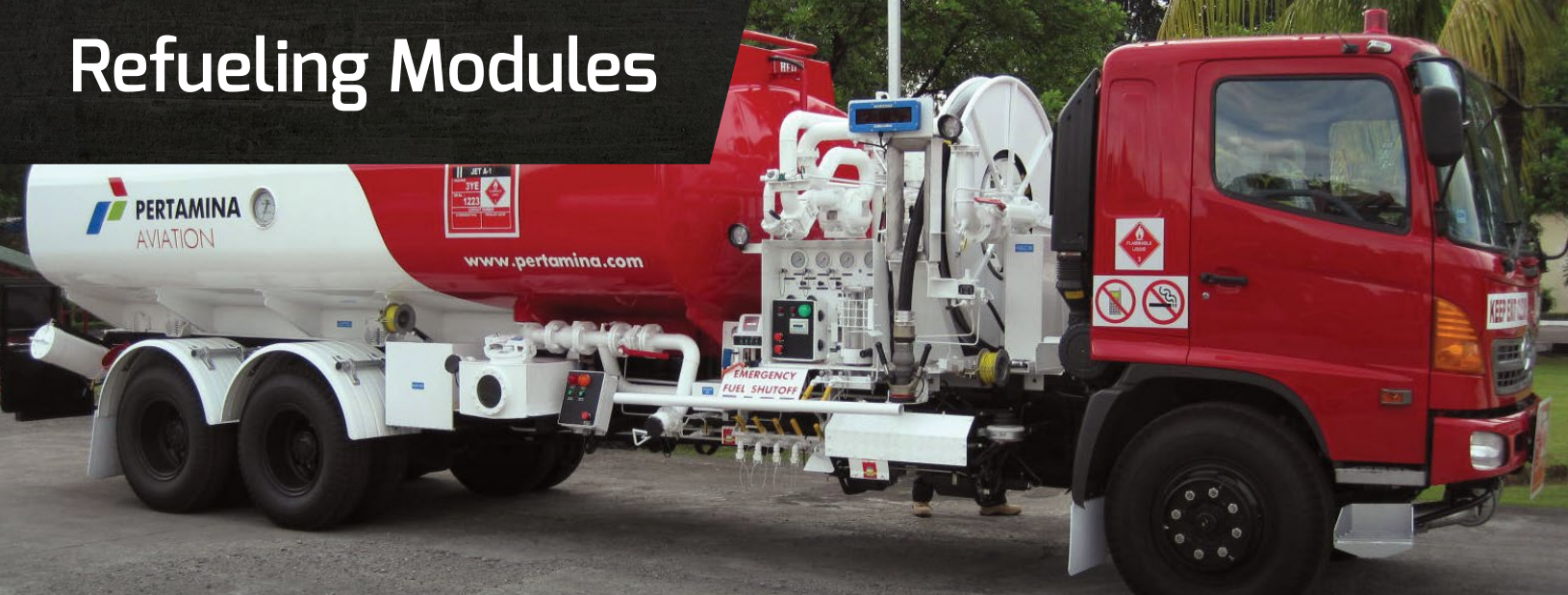
BETA's self-propelled hydrant carts are the most cost-effective solutions for fueling wide-body aircraft. Safely delivering fuel from a raised fueling platform or from a ground reel, the WBC800 is ideal for fueling aircraft of all sizes.



1000 GPM Wide-Body Carts

The WBC1000 hydrant cart is specially designed for fueling the largest aircraft in the world. Delivering 1000 GPM from a 4.2m fueling platform, no hydrant cart in the world can match its flow rate and efficiency.

Refueling Modules



Refueler and Hydrant Dispenser Modules for Global Integration

BETA has pioneered the design and manufacture of refueling modules (for aviation refuelers and hydrant dispensers) for in-country integration by our accredited assembly partners in distant regions such as Mexico and Indonesia. Designed for nearly turn-key integration, BETA refueling modules are capable of flow rates up to 600 GPM (2,300 LPM) and dispenser modules up to 1000 GPM (3800 LPM).

BETA's proprietary training and certification program ensures our partners have all the tools and capabilities to deliver and commission finished equipment to their local customers as if it came from the BETA factory in its entirety.

Absolute commitment to reliability, support, and delivery is the common thread between BETA and our accredited global partners.

50 GPM Avgas Refueler Modules

Delivers up to 50 GPM (190 LPM) flow rates with single reel and overwing nozzle for general aviation avgas refueling trucks.

300 GPM Jet Refueler Modules

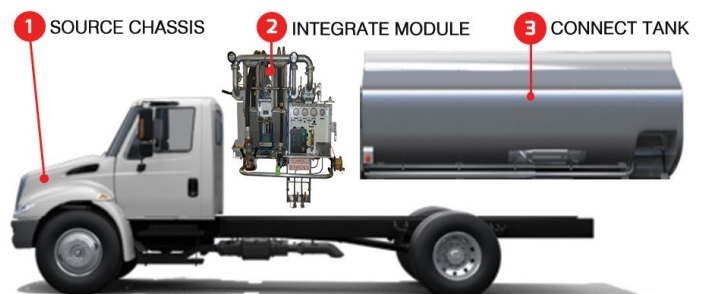
Delivers up to 300 GPM (1135 LPM) flow rates with single underwing reel and nozzle or dual underwing/overwing reels. Optimal for use with 3,000 to 5,000 gallon refuelers. Designed for commercial or military aviation use.

600 GPM Jet Refueler Modules

Delivers up to 600 GPM (2300 LPM) flow rates with single underwing reel and nozzle or dual underwing/overwing reels. Optimal for use with 3,000 to 7,000 gallon refuelers. Designed for commercial or military aviation use.

1000 GPM Hydrant Dispenser Modules

Delivers up to 1000 GPM (3800 LPM) flow rates with 4.2 m lift platform for airports with underground hydrant systems and fueling aircraft up to the A380.



Chassis, Tank and Module Integration

Global partners can integrate BETA modules with locally sourced tank and chassis to serve in-country oil companies and airlines. This adds value and jobs to their local economies.

Refueling Trucks

Modular design provides long-term flexibility

The customer's long-term investment is foremost on the minds of BETA engineers. BETA's proprietary modular design provides ultimate flexibility in chassis selection while providing true build-to-spec conformity and eliminating build-to-build variability.

No longer will a 10-year service life on a chassis dictate the service life of your fueling equipment. With an effective, useful life of over two decades, the BETA fueling module is designed to easily transfer to a new chassis when the original chassis expires, extending two thirds of the investment an additional 10 years.



Avgas Refueler Trucks

50 GPM (190 LPM) flow rates are optimal for use with 750 to 1000 Gallon (3800 L) avgas trucks.

Jet Refueler Trucks

300 GPM (1135 LPM) flow rates are optimal for use with 1000 Gallon (3800 L) to 7,000 Gallon (26,600 L) refuelers.

Jet Refueling Tankers

800 GPM (3030 LPM) flow rates are optimal for use on 10,000 gallon (40 KL) tank trucks.



Military Refueling

*Serving the US and Foreign
Ally Militaries since 1972*

BETA proudly serves our military with mission-critical fueling equipment, allowing our servicemen and women to safely and effectively complete their missions. From multi-aircraft fueling units to filter-water separators, BETA's defense equipment has proven reliable in the harshest of conditions.



Multi-Aircraft Servicing Cart

Manufactured for the U.S. Air Force, an integral part of the FORCE program, the R-20 unit delivers up to 550 GPM through two nozzles to two aircraft simultaneously.



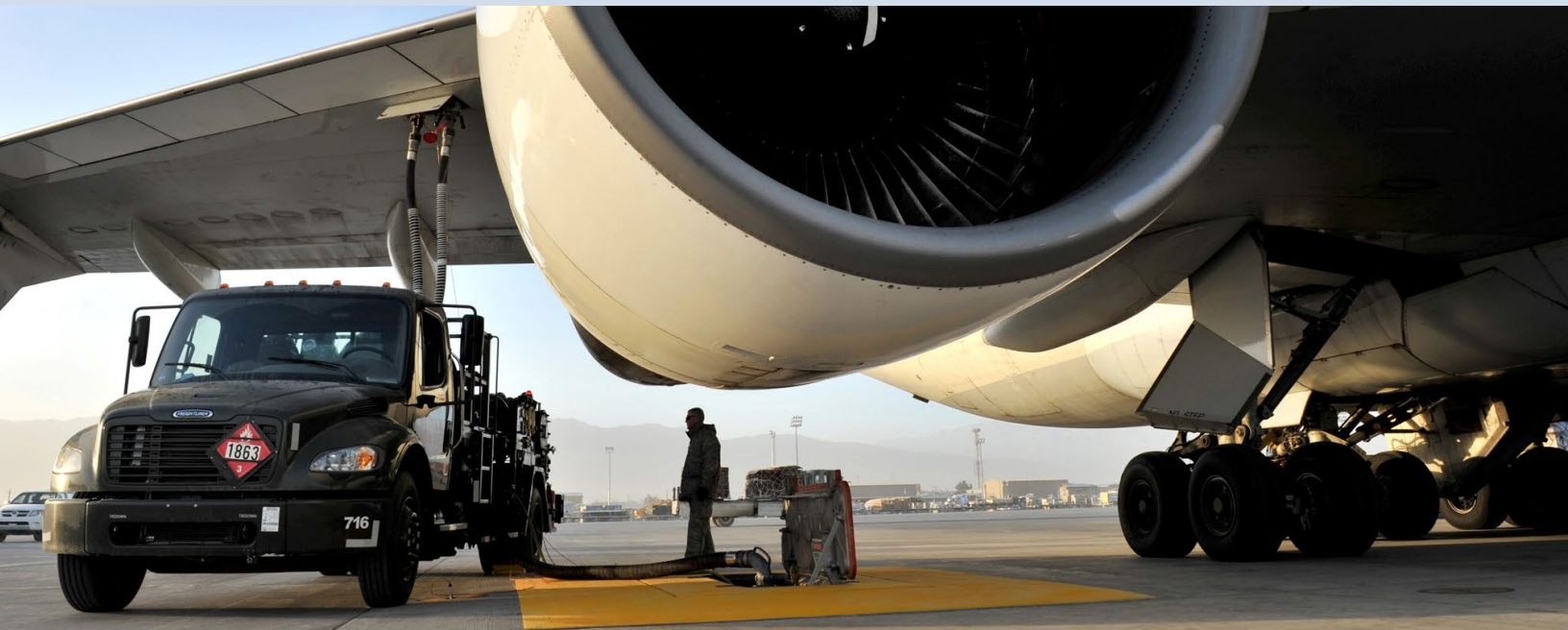
1200 GPM Fuel Filtration Cart

The R-19 fuel filtration cart combines with the R-20 unit to provide 1200 GPM of clean fuel to the most valuable aviation assets of the U.S. Air Force.



1000 GPM Hydrant Dispenser

The HSV is capable of servicing aircraft from a Type III Hydrant System, utilizing ground servicing hoses at a rate of 750 gallons per minute (GPM) or lift platform hoses at a maximum rate of 1,000 GPM, and defueling at a maximum rate of 300 GPM.



Filtration



Fuel Filtration Vessels

BETA is an ASME U-stamp certified manufacturing facility approved to manufacture and validate fuel filtration vessels for use in global aviation. BETA's aluminum and stainless steel vessels eliminate the risk of internal epoxy damage that commonly occurs in the field with carbon steel vessels.

BETA is the only commercial aviation refueling vehicle manufacturer certified to manufacture code-stamped vessels. BETA also carries additional certifications including R-stamp for refurbishment and repair inhouse or infield.

From 50 GPM to over 1200 GPM flow rates, BETA is capable of manufacturing a full range of designs and performance requirements to ensure your fuel is clean and dry.



Filter/Water Separators

Filter/water separators are two-stage filter vessels designed to remove ultra-fine contamination and separate water from petroleum-based fuels.

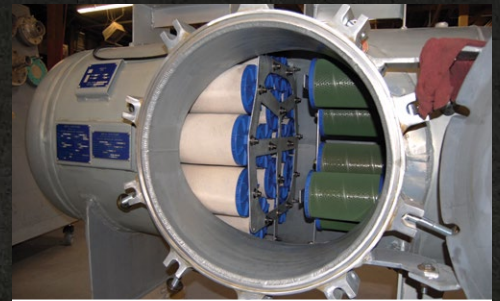
- Aluminum or stainless steel construction
- Qualified to latest Edition of EI 1581
- EI 1596 Design & Construction
- Built to ASME Code, Section VIII, stamped and certified
- Easy to service / low maintenance



Filter Vessels

Filters ultra-fine solids with microfilters or defends against water and dirt contaminants with water barrier technologies from migrating into aviation fuels.

- Aluminium or stainless steel construction
- EI 1596 Design & Construction
- Built to ASME Code, Section VIII, stamped and certified
- Easy to service / low maintenance



Filter Cartridges / Elements

BETA provides a complete line of cartridge sets qualified to test to the latest EI 1581 for use in Filter/Separators.

All filter vessel cartridges are qualified to the EI specifications.

This family of cartridges provides optimum filtration performance when used in Velcon filter vessels or in vessels manufactured by Facet or Faudi.

Systems and Components

**Equipment uptime is the primary concern of our customers.
We provide a full range of aviation fueling parts and accessories.**

We manufacture over 70% of the components on the equipment we provide and maintain a stock of common replacement components for immediate availability to our customers. Such replacement parts as well as components manufactured by our leading component partners are available through BETA's spare parts department or through global distribution partners as OEM replacements.

**FOR SPARE PARTS INQUIRIES,
CONTACT US AT:**

Email: Sales@betafueling.com
Phone: +1 336 342 0306

BETA manufactures a variety of fueling related systems such as fueling ladders, filter vessels, lift platforms, and relaxation chambers to name a few.

BETA Fueling Ladders

Ultra-durable fueling ladders for a full range of aircraft with single point nozzle connections. Available in towable configuration.



Common Replacement Parts

- Fueling nozzles and couplers
- Filter cartridges and elements
- Control valves
- Meters / Registers
- Large Digit Displays
- Printers
- Bonding / Grounding Reels
- Hoses
- Gauges
- Deadman Controls
- Pumps
- Venturi
- Control Systems
- Swivel Joints
- Interlock brackets and sensors
- Emergency / Safety parts
- 1000's more available

BETA's commitment to **RELIABILITY, SUPPORT, AND DELIVERY™** starts with our dedication to human resources and safety, and follows through engineering, manufacturing, and quality assurance.



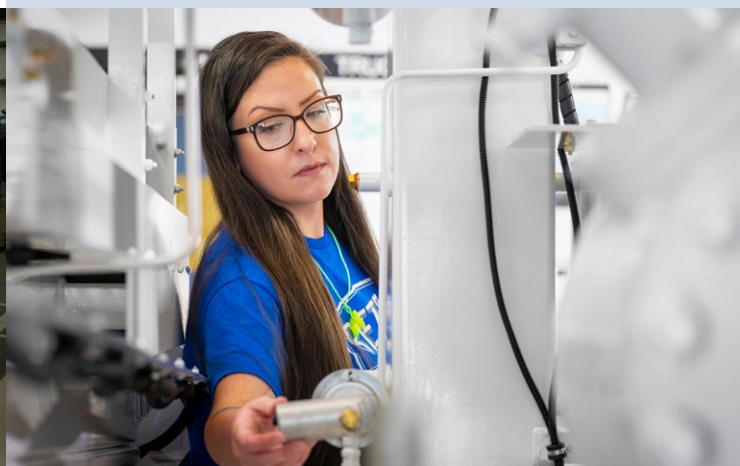
Human Resources / Safety

Our skilled workforce is comprised of local experts who take great pride in the products they produce and the support they provide.

We, in turn, take great pride in our employees and are committed to their professional development, success and well-being. Driven by a comprehensive Health, Safety, and Environmental program, we make every effort to ensure the continuous safety of our employees.

Engineering

BETA's engineering team has decades of experience in designing fueling systems for operational simplicity and long term reliability. Our development process engages with our customers throughout every build, focuses on their needs, and fanatically supports them long after our product leaves the factory.



Operations / Manufacturing

Every operational metric at BETA is focused on improving product reliability, providing fanatical support, and meeting or exceeding our delivery commitments. We employ Lean Manufacturing tools and concepts including Kaizen Blitz, 5S, visual management, and cellular manufacturing to achieve those metrics, and are passionate about serving our customers from this world-class manufacturing facility.

Quality / Reliability / Assurance

Every BETA product goes through rigorous stage gate quality inspections at every phase of manufacturing. Each unit is then fully pre-commissioned in our new state-of-the-art flow testing lab, simulating real-world fueling scenarios, failure modes, and corrective actions required to ensure maximum uptime in the field.



TEL +1 336 342 0306 **FAX** +1 336 342 9969

1209 Freeway Drive | Reidsville, NC 27320 | USA

betafueling.com

To obtain a digital version of this brochure, as well as informational materials on BETA refueling modules, hydrant dispenser carts and truck-mounted hydrant dispensers, please scan the code to the right or visit www.betafueling.com/downloads.

